

WARNING

This material has been reproduced and communicated to you by or on behalf of *Charles Darwin University* in accordance with section 113P of the *Copyright Act 1968 (Act)*.

The material in this communication may be subject to copyright under the Act.
Any further reproduction or communication of this material by you may be the subject of copyright protection under the Act.

Do not remove this notice



Charles Darwin University

Final Examination

Family Name					
Given Name/s					
Student Number					
Teaching Period	Semester 2, 2018				

MUS215 – Theory of Music 4	DURATION	
	Reading Time:	10 minutes
	Writing Time:	120 minutes
INSTRUCTIONS TO CANDIDATES		
<p>Please answer all 15 questions. All answers are to be written on the examination paper. Note that questions are not of equal value. Marks for each question are indicated. Total of marks: 100</p>		
EXAM CONDITIONS		
<p><u>You may begin writing from the commencement of the examination session.</u> The reading time indicated above is provided as a guide only.</p>		
This is a CLOSED BOOK examination		
No calculators are permitted		
No handwritten notes are permitted		
No dictionaries are permitted		
ADDITIONAL AUTHORISED MATERIALS	EXAMINATION MATERIALS TO BE SUPPLIED	
No additional printed material is permitted	2 x Scrap Paper Manuscript Paper	

**THIS EXAMINATION IS PRINTED
DOUBLE-SIDED.**

**THIS PAGE HAS BEEN INTENTIONALLY
LEFT BLANK.**

FINAL EXAMINATION PAPER

MUS215 THEORY OF MUSIC 4

TOTAL POSSIBLE MARKS: 100

Marks for each question are indicated.

Please answer all questions on the examination paper.

Question 1 (____ /10)

Explain the following terms:

a)Chromatic semitone:

.....

b)Modulation:

.....

c)Sequence:

.....

d)Cadence:

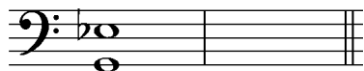
.....

e)Syncopation:

.....

Question 2 (/12)

Write and name the inversions of these intervals.



Question 3 (___ /3)

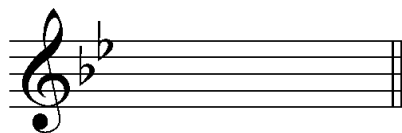
Mark with a tick all the chromatic semitones on the staff below:



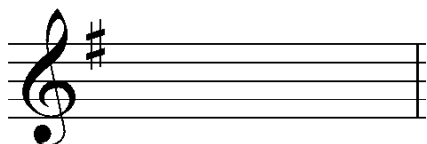
Question 4 (___ /6)

Write these triads in the Major keys indicated by the key signatures:

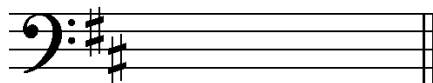
First inversion triads are indicated by "b"



IIb



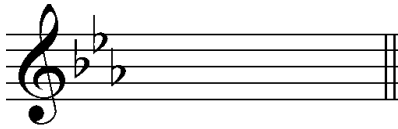
IV



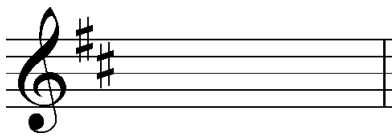
Vb

Question 5 (___ /8)

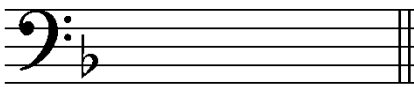
Write these triads in the Minor keys indicated by the key signatures.



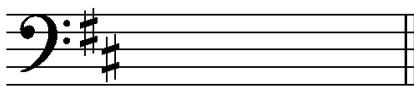
Vb



IIb



VI



Ib

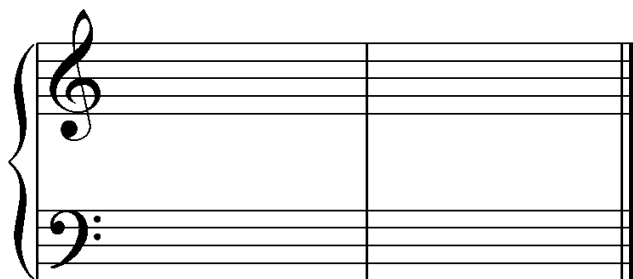
Question 6 (___ /6)

Write the **Perfect Cadence** with the appropriate key signatures.

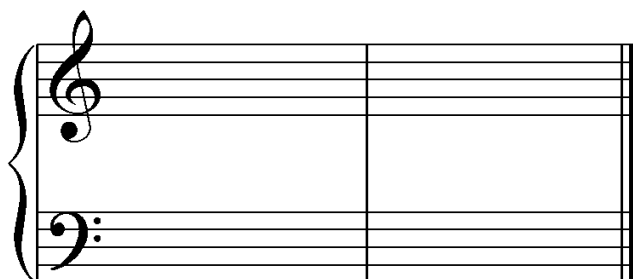
Remember the following rules:

- Bass sings the root notes
- Leading-note goes to the Tonic
- Note in common
- Whatever is left

A Major



G Minor



Question 7 (___ /6)

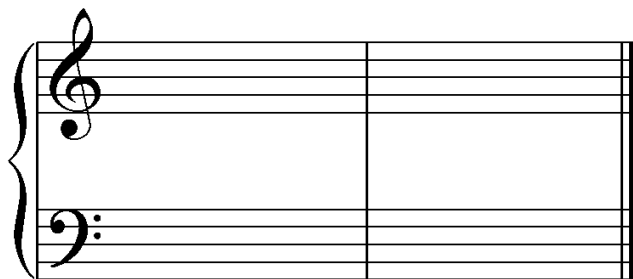
Fill in the blanks:

The **Plagal Cadence** consists of Chordmoving to Chord.....

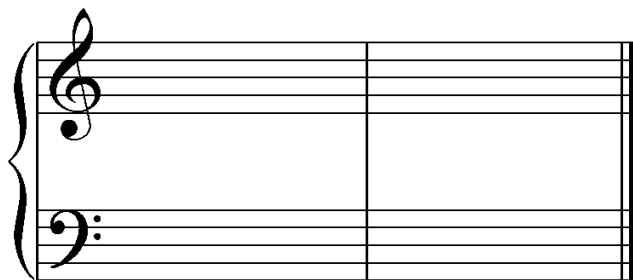
- Bass sings the root notes
- Note in common
- Other two voices step down

Write Plagal Cadences in the keys indicated with the appropriate key signatures.

E Major



D Minor



Question 8 (6)

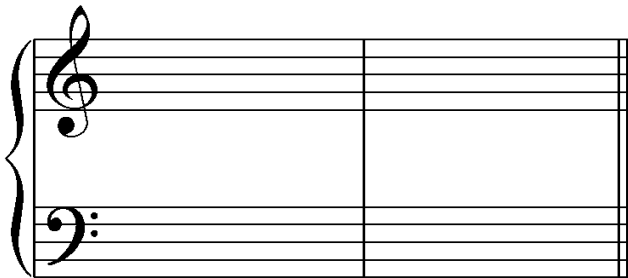
Fill in the blank:

The **Imperfect Cadence** consists of any chord moving to Chord.....

Write an Imperfect Cadence with Chord IV to V using the appropriate key signatures.

- Bass note steps up
- All other voices move down

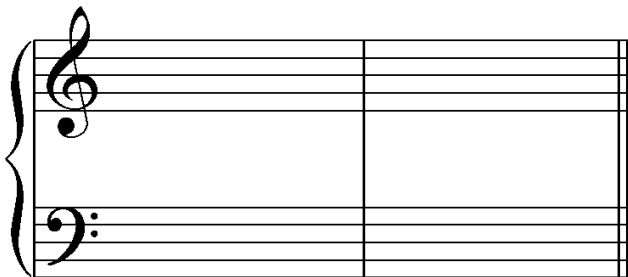
B flat Major



Write an Imperfect Cadence with Chord II to V using the appropriate key signature.

- All voices move to their nearest neighbour

A flat Major



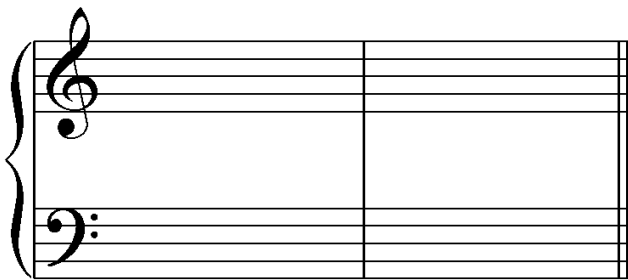
Question 9 (___ /3)

Fill in the blank:

TheCadence consists of Chord V moving to Chord VI

Draw an example of this cadence in the key of F Major noting the following :

- Root of the chord is in the bass
- Double the third in Chord VI
- Leading note goes to the tonic
- 2 parts move up, 2 parts move down
- Write the key signature

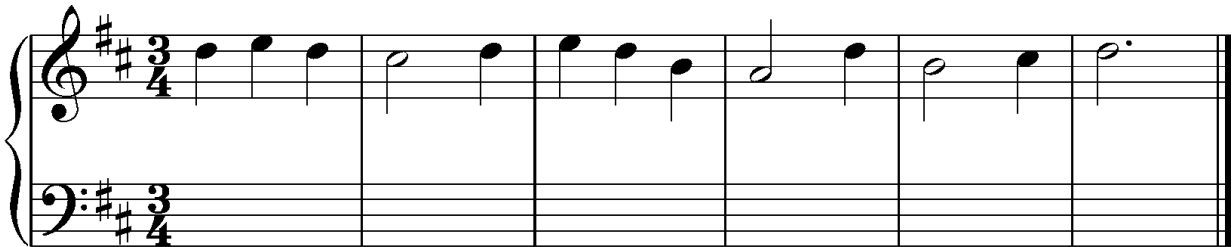


Question 10 (____ /10)

Harmonise the following in 4 part vocal style.

Remember the following:

- Cadence points
- Try to use contrary motion between the outer parts wherever possible
- Try to use repeated notes for inner parts
- Never double the leading note
- Write the chord indications below each note



Question 11 (/5)

Modulation

Name the tonic key and modulation in the given melodies.

i)



Tonic key:.....Modulation:.....

ii)



Tonic key:.....

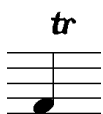
1st Modulation:.....

2nd Modulation:.....

Question 12 (___/6)

Ornaments

Give the names of the ornaments below.



What is the name of the ornament that indicates the way these notes are played?



Ornament:



Ornament:.....

Question 13 (/7)

Baroque Suite Movements

i) Name in correct order the four movements that are regularly found in a Suite.

.....
.....
.....
.....

ii) Which is the only dance in compound time?

.....

iii) How would you distinguish a Minuet from a Sarabande?

.....
.....
.....

iv) What is the special feature of a Gigue that distinguishes it from the other movements in a Suite?

.....

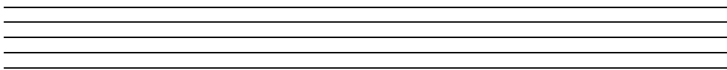
Question 14 (___ /8)

Clefs and Stringed Instruments

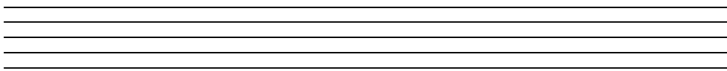
Write the tunings for each of the stringed instruments.

- Use the appropriate clefs.

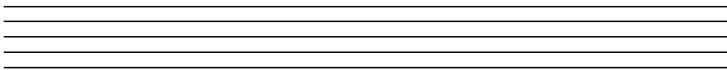
Violin



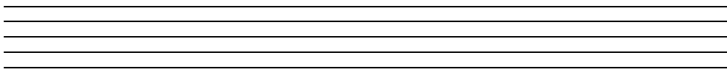
Viola



Cello



Double bass



Question 15 (___ /4)

Give the Italian terms to indicate the following string playing techniques:

i) Play with the bow:

ii) Pluck with the finger:

iii) Play with the bow on or near the bridge:

iv) Play with the bow on or near the finger board:

END OF QUESTIONS