

WARNING

This material has been reproduced and communicated to you by or on behalf of *Charles Darwin University* in accordance with section 113P of the *Copyright Act 1968 (Act)*.

The material in this communication may be subject to copyright under the Act.
Any further reproduction or communication of this material by you may be the subject of copyright protection under the Act.

Do not remove this notice



Family Name					
Given Name/s					
Student Number					
Teaching Period	Semester 1, 2019				

MUS114 – Theory of Music 1	DURATION	
	Reading Time:	10 minutes
	Writing Time:	120 minutes
INSTRUCTIONS TO CANDIDATES		
<p>Answer all 20 questions. Note that questions are not of equal value. Marks for each question are indicated. There are a total of 100 marks for this paper. All answers are to be written on the examination paper.</p>		
EXAM CONDITIONS		
<p><u>You may begin writing from the commencement of the examination session.</u> The reading time indicated above is provided as a guide only.</p>		
This is a CLOSED BOOK examination		
No calculators are permitted		
No handwritten notes are permitted		
No dictionaries are permitted		
ADDITIONAL AUTHORISED MATERIALS	EXAMINATION MATERIALS TO BE SUPPLIED	
No additional printed material is permitted	2 x Scrap Paper Manuscript Paper	

**THIS EXAMINATION IS PRINTED
DOUBLE-SIDED.**

**THIS PAGE HAS BEEN INTENTIONALLY
LEFT BLANK.**

MUS114 THEORY of MUSIC 1

Semester 1, 2019

Answer all questions. Note that questions are NOT of equal value. Marks for each question are indicated. There are a total of 100 marks for this paper. All answers are to be written on this paper

Question 1

/8

Complete the chart below.

NOTE	NAME	REST
	Semibreve	
	Minim	
	Whole note	
	Half note	

Question 2

/2

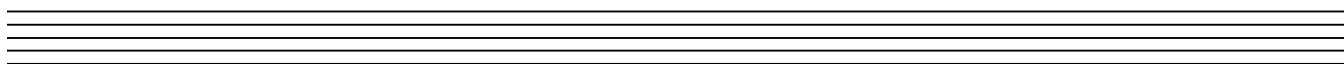
Write below the major scale pattern of tones and semitones.

Question 3

/10

On the staff below, write the following notes using crotchets. precede each note with the correct clef.

- C sharp on a ledger line above the bass staff
- F natural on a ledger line below the treble staff
- E flat on a line on the treble staff
- A flat on the bass staff
- B flat on the treble staff



Question 4

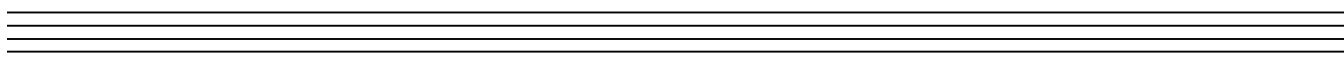
/2

Write below the harmonic minor scale pattern of tones and semitones.

Question 5

/4

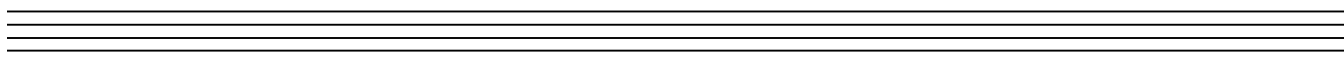
Draw the F major scale using semibreves. One octave ascending and descending on the treble clef. Use a key signature.



Question 6

/4

Draw the A harmonic minor scale using quarter notes. 1 octave ascending on the Bass clef. Use accidentals instead of a key signature.



Question 7

/5

Draw the D major scale using minims. 1 octave descending. Use the treble clef. Use accidentals. Mark the semitones with brackets.

Question 8

/4

On the treble stave, write the key signatures of the scales named

A major

D Minor

D Major

E Minor

Question 9

/4

Draw the tonic triads for the scales named. Use the bass clef and write the key Signatures.

F major

A Minor

C Major

D Minor

Question 10

/8

Clearly describe where you would find on a keyboard:

- F sharp
- C sharp
- B flat
- E flat

Question 11

/2

What is the bass clef also known as?

What is the treble clef also known as?

Question 12

/8

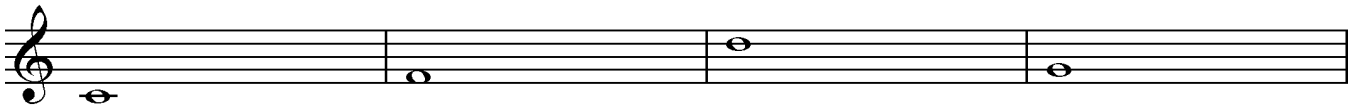
Above each of the following notes, draw the correct interval. Use accidentals where necessary.

Octave

Major 3rd

Major 2nd

Major 7th

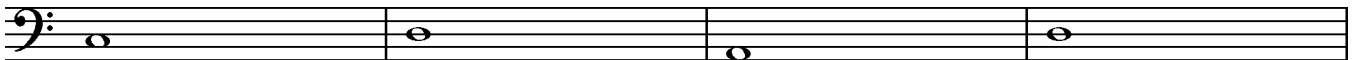


Perfect 4th

Leading note

Perfect 5th

Minor 3rd



Question 13

/4

How many quavers are there in a dotted minim plus a crotchet?

How many crotchets are there in a semibreve plus a minim?

Question 14

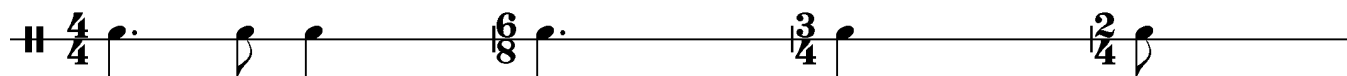
/2

Give an example of a Compound time signature

Question 15

/4



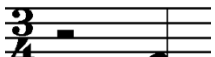
Complete each bar using rests.



Question 16

/3

The following table contains bars of rhythms which have the wrong grouping. Correct these bars and write them in the column provided.

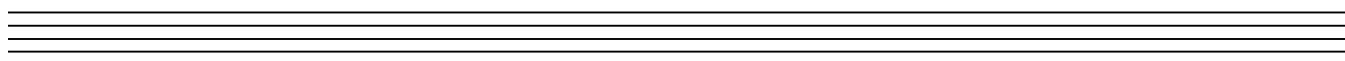
Incorrect Rhythm	Corrected Rhythm
	
	
	

Question 17

/4

Using this bass line in D minor:

- Put a circle around the anacrusis
- Write the scale degree numbers under the notes
- Transpose into E minor
- Use a key signature



Question 18

/10

Complete this table.

Abbreviation	Full Name	Meaning
	Ritardando	
D.S		
	Accelerando	
p		
		Very loud

Question 19

/4

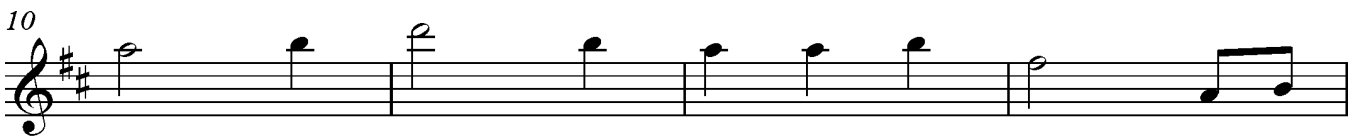
Add bar lines to this tune. Mark the strong beat with accent marks



Question 20

/8

Study this tune and then answer the questions below.



- a) What is the key?
- b) Describe the time signature
- c) What is the form?
- d) Mark the sections using the letters A and B
- e) Draw a circle around the anacrusis
- f) Write the scale degree numbers under the notes in the first 2 bars
- g) Add the Italian terms to indicate this piece to be play quickly and softly

END OF QUESTIONS