

WARNING

This material has been reproduced and communicated to you by or on behalf of *Charles Darwin University* in accordance with section 113P of the *Copyright Act 1968 (Act)*.

The material in this communication may be subject to copyright under the Act.
Any further reproduction or communication of this material by you may be the subject of copyright protection under the Act.

Do not remove this notice



Family Name					
Given Name/s					
Student Number					
Teaching Period	Semester 1, 2019				

MUS214 – Theory of Music 3	DURATION	
	Reading Time:	10 minutes
	Writing Time:	120 minutes
INSTRUCTIONS TO CANDIDATES		
<p>Please answer all 20 questions. Note that questions are not of equal value. Marks for each question are indicated. There is a total of 100 marks for this paper. All answers are to be written on the examination paper.</p>		
EXAM CONDITIONS		
<p><u>You may begin writing from the commencement of the examination session.</u> The reading time indicated above is provided as a guide only.</p>		
This is a CLOSED BOOK examination		
No calculators are permitted		
No handwritten notes are permitted		
No dictionaries are permitted		
ADDITIONAL AUTHORISED MATERIALS	EXAMINATION MATERIALS TO BE SUPPLIED	
No additional printed material is permitted	2 x Scrap Paper Manuscript Paper	

**THIS EXAMINATION IS PRINTED
DOUBLE-SIDED.**

**THIS PAGE HAS BEEN INTENTIONALLY
LEFT BLANK.**

MUS214 THEORY of MUSIC 3

Semester 1, 2019

Please answer all 20 questions. Note that questions are NOT of equal value. Marks for each question are indicated. There is a total of 100 marks for this paper. All answers are to be written on this paper.

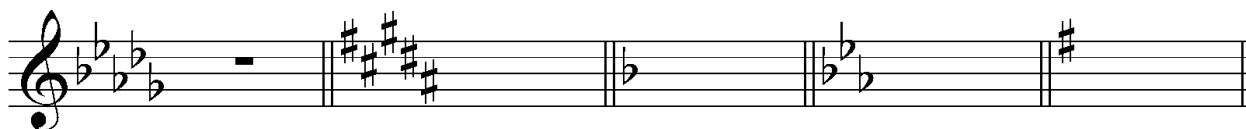
Question 1 (/5)

Draw the following key signatures using the Treble Clef.

- a) F# Major
- b) Bb Minor
- c) Db Major
- d) Eb Major
- e) A Major

Question 2 (/10)

Name the following key signatures, giving both the Major and Minor keys.



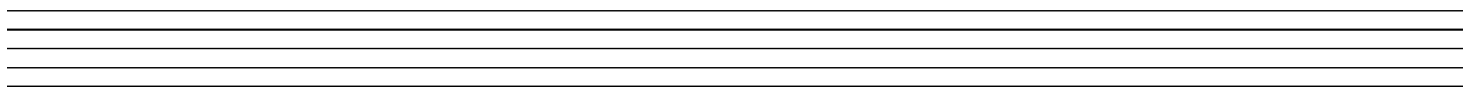
Major:.....

Minor:.....

Question 3 (/3)

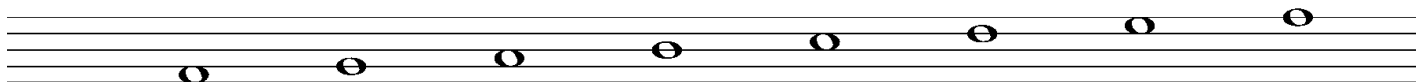
Write the scale of D Major.

- Use the Bass Clef
- Write the key signature
- Use minims
- Write one octave ascending and descending
- Start and end on the Mediant



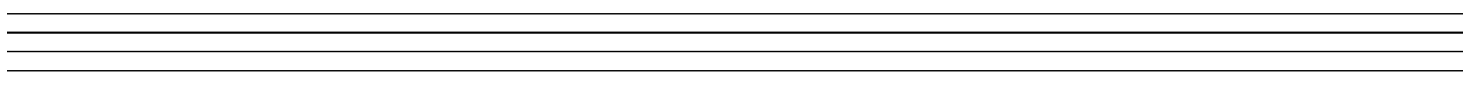
Question 4 (/3)

Add a clef and accidentals to make this the scale of F# Minor. Mark each semitone with a slur.



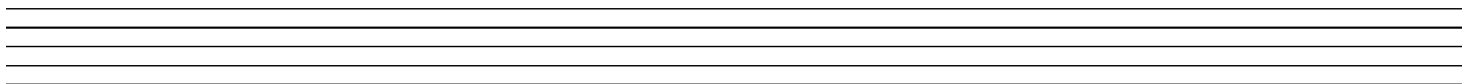
Question 5 (/3)

Write a Whole-tone Scale starting on G, ascending and descending. Use the G Clef.



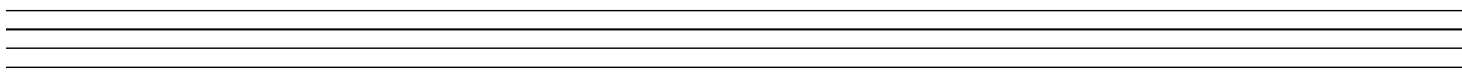
Question 6 (/3)

Write a Whole-tone Scale starting on Gb, ascending. Use the F Clef.



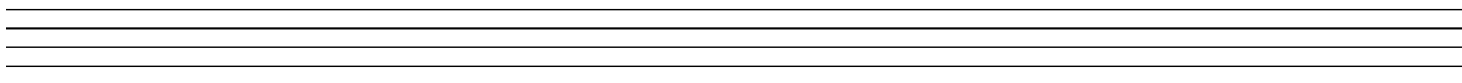
Question 7 (/3)

Write a Chromatic Scale starting on B ascending. Use a Treble Clef.



Question 8 (/3)

Write a Blues Scale starting on C, ascending for two octaves. Use a Treble Clef



Question 9 (/3)

Write the Pentatonic Scale starting on the given note, ascending and descending.



Question 10 (/3)

Write the Pentatonic Scale starting on the given note, ascending and descending.



Question 11 (/10)

For each of the following, write the named triad.

- Use accidentals, not the key signature
- Write in semibreves
- Use a Bass Clef
- a) C# Minor, dominant, first inversion
- b) E Major, tonic, root position
- c) A Major, subdominant, root position
- d) F Minor, dominant, first inversion
- e) G Major, dominant, root position

Two sets of empty musical staves for writing the triads.

Question 12 (/2)

What is a Cadence?

.....

.....

Question 13 (/2)

What are the Primary Triads in any given key?

.....

.....

Question 14 (/2)

On which degrees of the scale (give the technical names) are the Secondary Triads built?

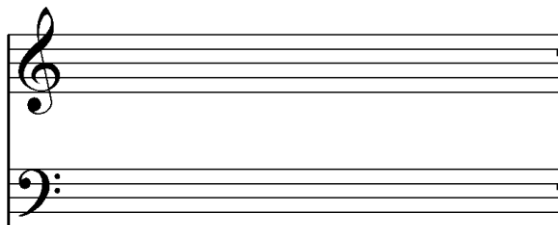
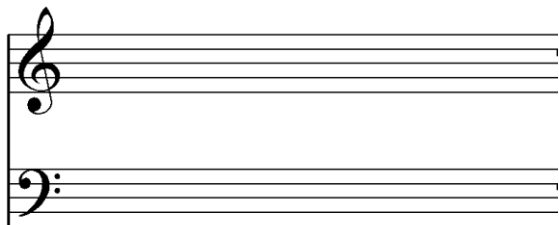
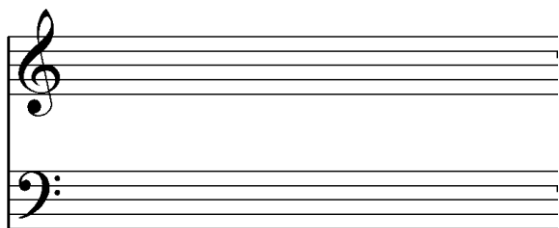
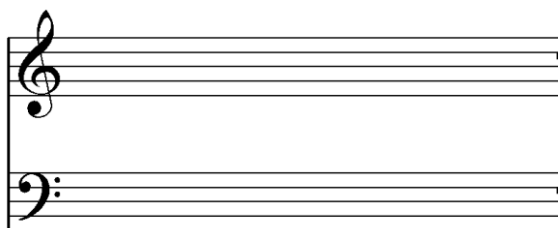
.....

.....

Question 15 (/12)

Write these cadences in four-part vocal style. Use the appropriate bracket to connect the staves.

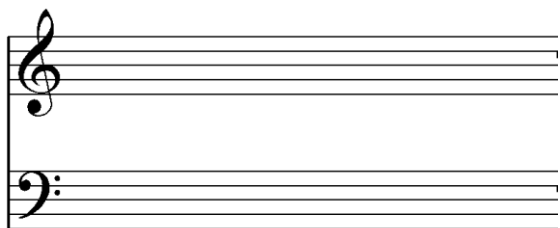
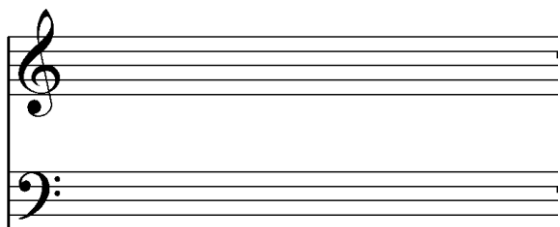
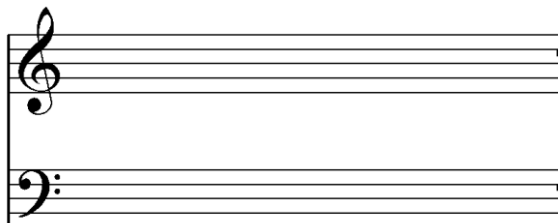
- Write the key signature
- Use minims
- a) E Major, plagal cadence
- b) Db Major, perfect cadence
- c) B Minor, perfect cadence
- d) A flat Major, plagal cadence



Question 16 (/9)

Write three kinds of imperfect cadence in keyboard style in F minor. Use the appropriate bracket to connect the two staves.

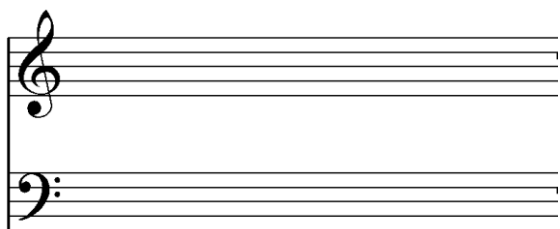
- Use accidentals, not the key signature
- Use semibreve
- Name (using Roman numerals) the chords used in the cadences



Question 17 (/3)

Using VI-V, write in keyboard style, an imperfect cadence in Bb Major.

- Use a key signature
- Use minims



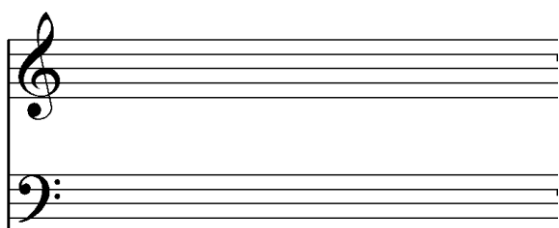
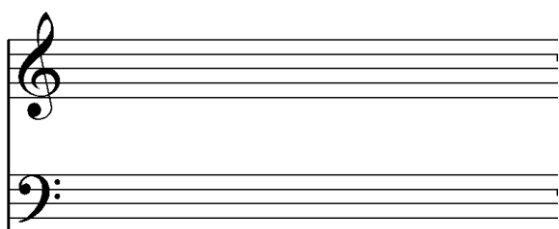
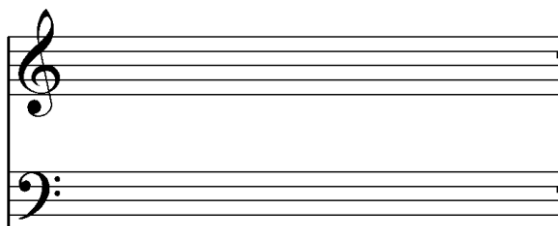
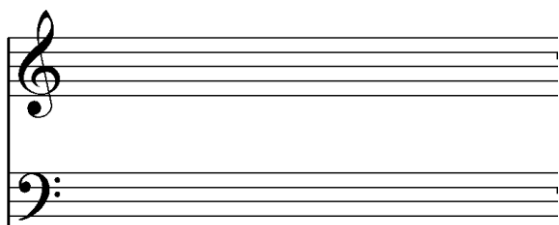
Question 18 (/13)

What is the cadence formed when Chord V is followed by Chord VI?

.....

Write this cadence in the following keys using the appropriate key signatures and brackets.

- a) In C Major, four-part vocal style
- b) In C# Minor, four-part vocal style
- c) In F# Major, keyboard style
- d) In D Minor, keyboard style



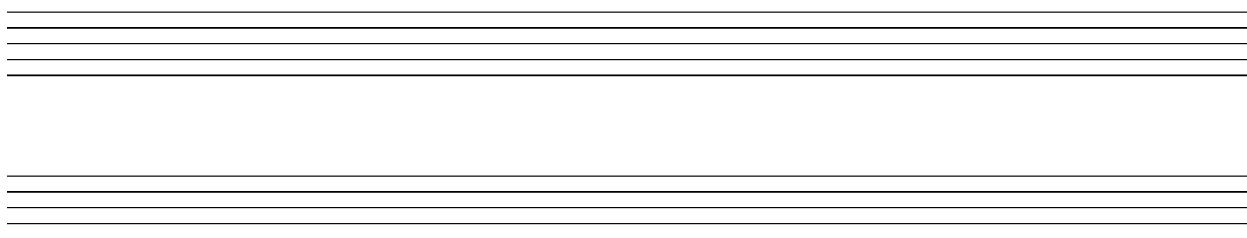
Question 19 (/4)

Write a suitable rhythmic pattern to the following couplet.

- Write the words clearly under the notes
- Use hyphens for words of more than one syllable.

Down in the city the fountains are playing

Waterdrops sparkling like gems in the sun.



Question 20 (/4)

Complete the following melody in the key of G Major, using the rhythm given.



END OF QUESTIONS